

PathHunter® eXpress PRLR-JAK1 Functional Assay

Catalog Number: 93-0686E3

Lot Number:

See Vial

Contents: 1 x 10⁶ cells per vial in 0.1 mL

Background

PathHunter CTK Functional cell lines are engineered to co-express a ProLink™ (PK) tagged Cytokine receptor, an untagged CTK, and an Enzyme Acceptor (EA) tagged SH2 domain. Activation of the Receptor-PK induces phosphorylation of the receptor by the CTK. This leads to SH2-EA recruitment, forcing complementation of the two β -galactosidase enzyme fragments (EA and PK). The resulting functional enzyme hydrolyzes substrate to generate a chemiluminescent signal. These cells have been modified to prevent long term propagation and expansion using a proprietary compound that has no apparent effect on assay performance.

Product Information

CTK Receptor: PRLR

Target CTK: JAK1

Accession #: NM_000949

CTK Accession #: NM_002227

Receptor Description: Prolactin receptor

CTK Description: Janus kinase 1

Receptor Species: Human

CTK Species: Human

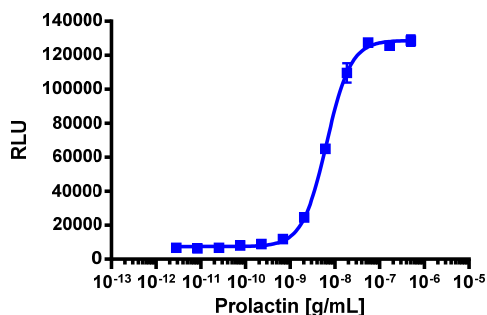
SH2 Domain: PLCG2

Cell Type: U2OS

Storage: Short term (<24 h): Store at -80°C; Long term (>24 h): Store in vapor phase of liquid nitrogen.

Functional Performance

Cells were plated in a 96-well plate and incubated for 24 hours at 37°C and 5% CO₂. Cells were then stimulated with a control agonist, using the assay conditions described below. Following stimulation, signal was detected using the PathHunter Detection Reagents provided in the kit according to the recommended protocol. For a detailed protocol, please refer to the user manual.



Control Agonist:

Recombinant Human Prolactin

Cell Plating Reagent:

AssayComplete™ Cell Plating 0 Reagent

Ligand Incubation Time (minutes):

180

Ligand Incubation Temperature (°C):

RT

EC₅₀ for SH2 recruitment (ng/mL):

6.5

Signal:Background at agonist E_{max}:

19.2

Additional Information

Control Agonist: Recombinant Human Prolactin

Vendor: Eurofins DiscoverX® (Catalog No. 92-1144)

Limited Use License Agreement

These products may be covered by issued US and/or foreign patents, patent application and subject to Limited Use Label License.

Please visit discoverx.com/license for a list of products that are governed by limited use label license terms and relevant patent and trademark information.

Ordering: +1.510.979.1415 option 4 or e-mail CustomerServiceDRX@eurofins.com

Technical support: +1.510.979.1415 option 5 or e-mail DRX_SupportUS@eurofinsUS.com

General product information: www.discoverx.com