

## PathHunter<sup>®</sup> CHO-K1 mMCHR1 $\beta$ -Arrestin Cell Line

**Catalog Number:** 93-0479C2

**Lot Number:** See Vial

**Contents:** 1 x 10<sup>6</sup> cells per vial in 1 mL

### Background

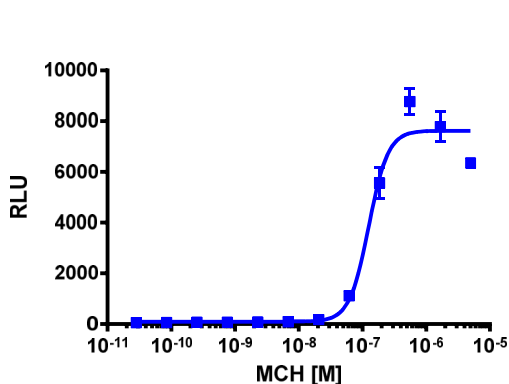
PathHunter  $\beta$ -Arrestin GPCR cell lines are engineered to co-express the ProLink<sup>™</sup> (PK) tagged GPCR and the Enzyme Acceptor (EA) tagged  $\beta$ -Arrestin. Activation of the GPCR-PK induces  $\beta$ -Arrestin-EA recruitment, forcing complementation of the two  $\beta$ -galactosidase enzyme fragments (EA and PK). The resulting functional enzyme hydrolyzes substrate to generate a chemiluminescent signal.

### Product Information

<b>Target GPCR:</b>	mMCHR1
<b>Description:</b>	Melanin concentrating hormone receptor 1
<b>Receptor Family:</b>	Melanin-concentrating hormone
<b>Coupling:</b>	Gi/Go
<b>Accession Number:</b>	NM_145132
<b>GPCR Species:</b>	Mouse
<b><math>\beta</math>-Arrestin Isoform:</b>	$\beta$ -Arrestin-2
<b>ProLink<sup>™</sup> Tag:</b>	PK1
<b>Cell Type:</b>	CHO-K1
<b>Storage:</b>	Short term (<24 h): Store at -80°C; Long term (>24 h): Store in vapor phase of liquid nitrogen.

### Functional Performance

Cells were plated in a 384-well plate and incubated overnight at 37°C and 5% CO<sub>2</sub> to allow the cells to attach and grow. Cells were then stimulated with a control agonist, using the assay conditions described below. Following stimulation, signal was detected using the PathHunter Detection Kit according to the recommended protocol. Please refer to page 2 for recommended assay reagents, detection reagents, and control compounds.



<b>Cell Number/Well:</b>	5000
<b>Control Agonist:</b>	Melanin Concentrating Hormone (6-17)
<b>Agonist Incubation Time (minutes):</b>	90
<b>Agonist Incubation Temperature (°C):</b>	37
<b>EC<sub>50</sub> for Agonist Stimulation (nM):</b>	126.2
<b>Signal:Background at Agonist E<sub>max</sub>:</b>	115.3

### Passage Stability

This cell line has been confirmed to be stable through a minimum of 10 passages with no significant drop in assay window or change in EC<sub>50</sub>.

### Mycoplasma Testing

This lot was tested and found to be free of mycoplasma contamination. Data available upon request.

### Required Materials

The following additional materials are required but not provided:

Product Use*	Product Description	Catalog Number
Detection	PathHunter® Detection Kit	93-0001
Cell Culture	AssayComplete™ Cell Culture Kit-107	92-3107G
Cell Plating	AssayComplete™ Cell Plating 2 Reagent	93-0563R2A
Cell Detachment	AssayComplete™ Cell Detachment Reagent	92-0009
Cell Thawing	AssayComplete™ Thawing Reagent T2	92-4102TR
Cell Freezing	AssayComplete™ Freezing Reagent F2	92-5102FR

\*Please inquire about our cell line-specific AssayComplete Starter Packs to get you started with your cell culture needs.

### Required Antibiotics

Antibiotic Name	Concentration (µg/mL)	Catalog Number
AssayComplete™ Puromycin	Not Applicable	Not Applicable
AssayComplete™ Hygromycin B	300	92-0029
AssayComplete™ G418	800	92-0030

### Additional Ligand Information

**Control Compound:** Melanin Concentrating Hormone (6-17)

**Vendor:** Eurofins DiscoverX® (Catalog No. 92-1173)

Ordering: +1.510.979.1415 option 4 or e-mail [CustomerServiceDRX@eurofins.com](mailto:CustomerServiceDRX@eurofins.com)

Technical support: +1.510.979.1415 option 5 or e-mail [DRX\\_SupportUS@eurofinsUS.com](mailto:DRX_SupportUS@eurofinsUS.com)

General product information: [www.discoverx.com](http://www.discoverx.com)

### Limited Use License Agreement

These products may be covered by issued US and/or foreign patents, patent application and subject to Limited Use Label License.

Please visit [discoverx.com/license](https://discoverx.com/license) for a list of products that are governed by limited use label license terms and relevant patent and trademark information.