

PRODUCT DATASHEET

ChemiScreen™ C5aR Anaphylatoxin Receptor Stable Cell Line

CATALOG NUMBER: HTS017C

CONTENTS: 2 vials of mycoplasma-free cells, 1 mL per vial.

STORAGE: Vials are to be stored in liquid N₂.

BACKGROUND

ChemiScreen cell lines are constructed in the Chem-1 host, which supports high levels of functional receptor expression on the cell surface. Chem-1 cells contain high endogenous levels of Gα15, a promiscuous G protein, allowing most receptors to couple to the calcium signaling pathway.

C5a is a proinflammatory peptide generated through activation of the complement system, and is more potent than the other anaphylatoxins, C4a and C3a, in activating peripheral blood leukocytes (Gerard and Gerard, 1994). It can actively participate in the regulation of local cytokine network by stimulating production of proinflammatory cytokines (Buchner *et al.*, 1995; Hsu *et al.*, 1999). The proinflammatory effects of C5a are mediated through binding to a specific 7-TM chemoattractant receptor, C5aR (CD88). Binding of C5a to phagocyte C5aR induces chemotaxis, production of superoxide anions, and release of degradative enzymes. Pharmacologic or genetic disruption of C5a/C5aR interaction reduces sepsis (Riedemann *et al.*, 2003), immune complex-induced lung disease (Shushakova *et al.*, 2002), and Arthrogen-induced arthritis (Grant *et al.*, 2002) in experimental models. The cloned human C5a receptor-expressing cell line is made in the Chem-1 host, which supports high levels of recombinant C5aR expression on the cell surface and contains high levels of the promiscuous G protein Gα15 to couple the receptor to the calcium signaling pathway. Thus, the cell line is an ideal tool for screening for antagonists of C5a/C5aR interactions.

USE RESTRICTIONS

Please see **Limited Use Label License Agreement** (Label License Agreement) for further details.

WARNINGS

For Research Use Only; Not for Use in Diagnostic Procedures
Not for Animal or Human Consumption

GMO

This product contains genetically modified organisms.
Este producto contiene organismos genéticamente modificados.
Questo prodotto contiene degli organismi geneticamente modificati.
Dieses Produkt enthält genetisch modifizierte Organismen.
Ce produit contient organismes génétiquement des modifiés.
Dit product bevat genetisch gewijzigde organismen.
Tämä tuote sisältää geneettisesti muutettuja organismeja.
Denna produkt innehåller genetiskt ändrade organismer.

APPLICATIONS

Calcium Flux Fluorescence Assay

APPLICATION DATA

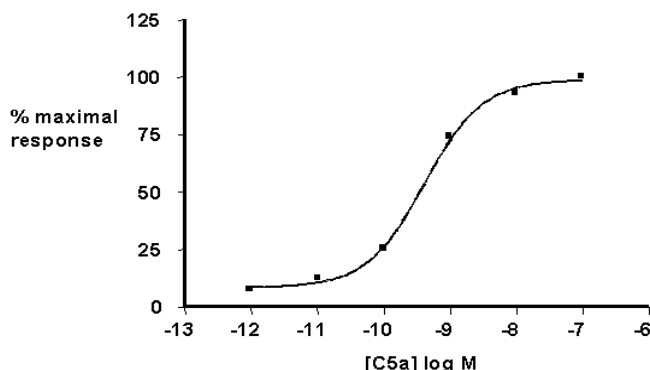


Figure 1. Representative data for activation of C5aR receptor stably expressed in Chem-1 cells induced by C5a using a fluorescent calcium flux assay. C5aR-expressing Chem-1 cells were seeded at 50,000 cells per well into a 96-well plate, and the following day the cells were loaded with a fluorescent calcium indicator. Calcium flux in response to the indicated ligand with a final concentration of 0.5% DMSO was determined on a Molecular Devices FLIPR^{TETRA}® with ICCD camera. Maximal fluorescence signal obtained in this experiment was 9,000 RLU. Similarly parental cells (catalog #: HTSCHEM-1) were tested to determine the specificity of the resulting signal.

Table 1. EC₅₀ value of C5aR-expressing Chem-1 cells.

LIGAND	ASSAY	POTENCY EC ₅₀ (nM)	REFERENCE
C5a	Calcium Flux - Fluorescence	0.6	Eurofins Internal Data

* The cell line was tested and found to have equivalent EC₅₀ and signal at 1, 3 and 6 weeks of continuous culture by calcium flux fluorescence.

CELL CULTURE

Table 2. Recommended Cell Culture Reagents (not provided)

Description	Component	Concentration	Supplier and Product Number
Basal Medium	DMEM high glucose Medium (4.5g/L)	-	Hyclone: SH30022
	Fetal Bovine Serum (FBS)	10%	Hyclone: SH30070.03
	Non-Essential Amino Acids (NEAA)	1X	Hyclone: SH30238.01
	HEPES	1X	EMD Millipore: TMS-003-C
Selection Medium	Basal Medium (see above)	-	
	Geneticin (G418)	250 µg/ml	Invivogen: ant-gn-5
Dissociation	Sterile PBS	-	Hyclone: SH30028.03
	0.25% Trypsin-EDTA	-	Hyclone: SH30042.01
CryoMedium	Basal Medium (see above)	40%	
	Fetal Bovine Serum (FBS)	50%	Hyclone: SH30070.03
	Dimethyl Sulfoxide (DMSO)	10%	Sigma: D2650

Cell Handling

1. Upon receipt, directly place cells in liquid nitrogen storage. Consistent cryopreservation is essential for culture integrity.
2. Prepare Basal Medium. Prepare 37°C Water Bath. Thaw cells rapidly by removing from liquid nitrogen, and immediately immersing in a 37°C water bath, until 90% thawed. Immediately sterilize the exterior of the vial with 70% ethanol.
3. Add vial contents to 15 mL Basal Medium in T75 Tissue Culture Treated Flask. Gently swirl flask and place in a humidified, tissue culture incubator, 37°C, 5% CO₂.
4. 18-24 Hours Post–Thaw, all live cells should be attached. Viability of the cells is expected to be 60-90%. At this time, exchange Basal Medium with Selection Medium.
5. When cells are approximately 80% confluent, passage the cells. It is suggested that user expand culture to create >20 vial Master Cell Bank at low passage number. *Cells should be maintained at less than 80% confluency for optimal assay results.*
6. Cell Dissociation: Aspirate Culture Medium. Gently wash with 1x Volume PBS. Add 0.1x Volume Warm Trypsin-EDTA. Incubate 4 min, 37°C, until cells dislodge. *If cells do not round up, place in 37° C incubator for additional 2 min.* Neutralize Trypsin and collect cells in 1x Volume Basal Medium.
7. Seed Cells for expansion of culture. It is recommended that cell lines are passaged at least once before use in assays.

Table 3. Cell Culture Seeding Suggestions: *User should define based on research needs.*

Flask Size (cm ²)	Volume (mL)	Total Cell Number (x10 ⁶)	Growth Period (hrs)
T75	15	5.0	24
T75	15	2.0	48
T75	15	0.45	72

ASSAY SETUP

Fluorescence

Table 4. Settings for FLIPR^{TETRA}® with ICCD camera option

Option	Setting
Read Mode	Fluorescence
Ex/Em	Ex470_495 / Em515_575
Camera Gain	2000
Gate Open	6 %
Exposure Time	0.53
Read Interval	1s
Dispense Volume	50 µl (25 µl for 384-well)
Dispense Height	95 µl (50 µl for 384-well)
Dispense Speed	50 µl/sec
Expel Volume	0 µl
Analysis	Subtract Bias Sample 1

Table 5. Assay Materials (Not provided)

Description	Supplier and Product Number
HBSS	Invitrogen: 14025
HEPES 1M Stock	EMD Millipore: TMS-003-C
Probenicid	Sigma: P8761
Quest Fluo-8™, AM	AAT Bioquest: 21080
C5a	Sigma: C5788
Non-Binding 96/384 well Plates (for ligand prep)	Corning: 3605/ 3574
Black (clear Bottom) cell assay plates	Corning: 3904/ 3712

Assay Protocol – Fluorescence

1. Dissociate Culture as Recommended. Collect in Basal Medium. Document Cell Count and Viability
2. Centrifuge the cell suspension at 190 x g for six min
3. Remove supernatant. Gently resuspend the cell pellet in Basal Medium. *It is suggested that end user optimize cell plating based on individual formats.* (Default: Resuspend in volume to achieve 5×10^5 cells/ml (i.e, if collected 5×10^6 TC, $\frac{5 \times 10^6}{5 \times 10^5/ml} = 10$ mL volume)
4. Seed cell suspension into black, clear bottom plate (100 μ L/well for 96-well plate). *When seeding is complete, place the assay plate at room temperature for 30 min.*
5. Move assay plate to a humidified 37°C 5% CO₂ incubator for 18-24 h.
6. Next day, prepare Assay buffer (HBSS, 20mM HEPES, 2.5 mM Probenicid, pH 7.4) and Loading buffer (Assay buffer with 5 mM Fluo8 Dye). *Note: Please prepare Fluo8 stock according to Manufacturer's Recommendations*
7. Remove medium from assay plate and wash 1X with Assay Buffer.
8. Add Loading buffer to assay plate (100 μ L/well for 96-well plate). Incubate plate for 1.5 h at room temperature, protected from light.
9. Prepare ligands in assay buffer at 3x final concentration in non-binding plates. Use Buffer Only Control Wells for Background Subtraction.
10. Create protocol for ligand addition. Please refer to FLIPR^{TETRA}® settings provided in Table 2. Set time course for 180 s, with ligand addition at 10 s.
11. After the run is complete, apply subtract bias on sample 1. We recommend using Negative Control Correction with Buffer Only Wells. Export data to according to research needs. For most Calcium Flux analysis using Export of Max Signal to end of run is sufficient.

HOST CELL

Chem-1, an adherent cell line expressing the promiscuous G-protein, G α 15.

EXOGENOUS GENE EXPRESSION

Human C5aR cDNA (Accession Number: M62505) and promiscuous G protein are expressed in a bicistronic vector

RELATED PRODUCTS

Product Number	Description
HTSCHEM-1	ChemiScreen™ Chem-1 Parental Cell Line (control cells)
HTS017M	ChemiScreen™ C5aR Anaphylatoxin Receptor Membrane Prep

REFERENCES

1. Buchner RR, et al. (1995) Expression of functional receptors for human C5a anaphylatoxin (CD88) on the human hepatocellular carcinoma cell line HepG2. Stimulation of acute-phase protein-specific mRNA and protein synthesis by human C5a anaphylatoxin. *J. Immunol.* 155: 308.
2. Gerard C, Gerard NP. (1994) C5A anaphylatoxin and its seven transmembrane-segment receptor. *Annu.Rev.Immunol.* 12: 775-808.
3. Grant, EP, et al. (2002) Essential role for the C5a receptor in regulating the effector phase of synovial infiltration and joint destruction in experimental arthritis. *J. Exp. Med.* 196: 1461-1471.
4. Hsu, M.H., et al. (1999) NF-kappaB activation is required for C5a-induced interleukin-8 gene expression in mononuclear cells. *Blood* 93: 3241-3249.
5. Riedemann, NC, et al. (2003) A key role of C5a/C5aR activation for the development of sepsis. *J. Leukoc. Biol.* 74: 966-970.
6. Shushakova, N, *et al.* (2002) C5a anaphylatoxin is a major regulator of activating versus inhibitory FcgammaRs in immune complex-induced lung disease. *J. Clin. Invest.* 110: 1823-30.

FOR RESEARCH USE ONLY; NOT FOR USE IN DIAGNOSTIC PROCEDURES. NOT FOR HUMAN OR ANIMAL CONSUMPTION

Unless otherwise stated in our catalog or other company documentation accompanying the product(s), our products are intended for research use only and are not to be used for any other purpose, which includes but is not limited to, unauthorized commercial uses, in vitro diagnostic uses, ex vivo or in vivo therapeutic uses or any type of consumption or application to humans or animals.

No part of these works may be reproduced in any form without permission in writing.

Limited Use Label License Agreement

In addition to the General Terms & Conditions of Sale for Products and Services section, this Product is subject to Limited Use Label License Agreement. Please go to <https://www.eurofinsdiscoveryservices.com/cms/cms-content/misc/legal-disclaimer/> for more information.

Eurofins Pharma Bioanalytics Services US Inc. is an independent member of Eurofins Discovery Services