

KILR[®] COLO-205 Cell Pool

Catalog Number: 97-1034P045

Lot Number:

See Vial

Contents: 2.7 x 10⁶ cells per vial in 1 mL

Background

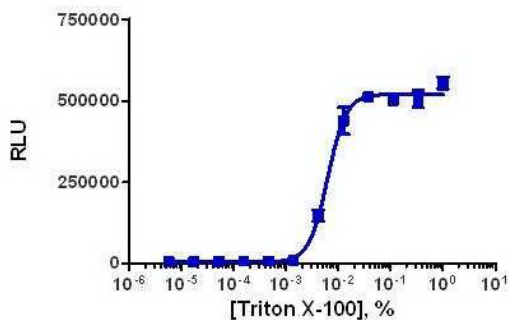
KILR cell lines are engineered to express an enhanced Prolabel (ePL) tagged housekeeping gene and may sometimes overexpress an untagged version of a receptor. Once the cells have been lysed the ePL-tagged protein is released into the media. Addition of enzyme acceptor (EA) will cause the complementation of the β-galactosidase enzyme fragments, EA and ePL. The resulting functional enzyme will hydrolyze its substrate to generate a chemiluminescent signal.

Product Information

Cell Background: COLO-205
Cell Line Species: Human
Cell Line Source: ATCC
Cell Type: Colon adenocarcinoma
Culture Mode: Semi-adherent
Cytotoxicity Validation: N/A
Storage: Short term (<24 h): Store at -80°C; Long term (>24 h): Store in vapor phase of liquid nitrogen.

Cytotoxicity Assay Performance

Cells were plated in a 96-well plate and incubated at 37°C and 5% CO₂ for indicated amount of time. Compound was added and the plate was incubated at 37°C/5% CO₂ using the assay conditions described below. Target cell death was detected using the KILR detection reagent according to the recommended protocol. Additional reagents needed are noted on this document.



Target Cell Number/Well: 10,000
Control Compound: Triton X-100
Cell Seeding Time (minutes): 0
Compound Incubation Time (minutes): 960
Compound Incubation Temperature (°C): 37

EC₅₀ for Compound: 0.006
Signal:Background Ratio: 96.9
Max % Lysis: 76

Recommended Culture Conditions: Split ratio: 1:2 to 1:6; Medium renewal: Every 2 to 3 days.

Note: Cells grow loosely attached and in suspension. Shake flask, retain the floating cells by transferring them into a centrifuge tube. Cells that remain attached may be removed using a standard trypsinization protocol and combined with the retained floating cells.

Passage Stability

This cell line has been confirmed to be stable through 15 passages with no significant drop in assay window or change in EC₅₀.

Mycoplasma Testing

This lot was tested and found to be free of mycoplasma contamination. Data available upon request.

Required Materials

The following additional materials are required but not provided:

Product Use*	Product Description	Catalog Number
Detection	KILR [®] Detection Kit	97-0001M
Cell Culture	AssayComplete™ Cell Culture Kit-101	92-3101G
Cell Plating	AssayComplete™ Cell Plating 39 Reagent	93-0563R39A
Cell Detachment	AssayComplete™ Cell Detachment Reagent	92-0009
Cell Thawing	AssayComplete™ Thawing Reagent T6	92-4106TR
Cell Freezing	AssayComplete™ Freezing Reagent F5	92-5105FR
Ligand Dilution	AssayComplete™ Protein Dilution Buffer	92-0023

*Please inquire about our cell line-specific AssayComplete Starter Packs to get you started with your cell culture needs.

Required Antibiotics

Antibiotic Name	Concentration (µg/mL)	Catalog Number
AssayComplete™ Puromycin	Not Applicable	Not Applicable
AssayComplete™ Hygromycin B	Not Applicable	Not Applicable
AssayComplete™ G418	500	92-0030

Additional Ligand Information

Control Compound: Triton X-100

Limited Use License Agreement

These products may be covered by issued US and/or foreign patents, patent application and subject to Limited Use Label License.

Please visit <https://www.discoverx.com/legal-policies/> for limited-use label license agreement and trademark information for this product.