

PathHunter® CHO-K1 ADCYAP1R1 (PAC1) β -Arrestin Cell Line

Catalog Number: 93-0249C2

Lot Number: See Vial

Contents: 2 x 10⁶ cells per vial in 1 mL

Background

PathHunter β -Arrestin GPCR cell lines are engineered to co-express the ProLink™ (PK) tagged GPCR and the Enzyme Acceptor (EA) tagged β -Arrestin. Activation of the GPCR-PK induces β -Arrestin-EA recruitment, forcing complementation of the two enzyme fragments. The resulting functional enzyme hydrolyzes substrate to generate a chemiluminescent signal. PathHunter cell lines expressing Gq-coupled receptors can also be used to detect calcium mobilization.

Product Information

Target GPCR: ADCYAP1R1

Description: Adenylate cyclase activating polypeptide receptor 1

Receptor Family: VIP and PACAP

β -Arrestin Isoform: β -Arrestin-2

Accession Number: AY366498

ProLink™ Tag: PK1

Coupling: Gs & Gq

Cell Type: CHO-K1

GPCR Species: Human

Storage: Short term (<24 h): Store at -80°C; Long term (>24 h): Store in vapor phase of liquid nitrogen.

Functional Performance

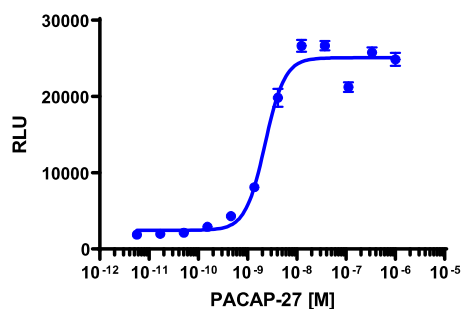
Cells were plated in a 384-well plate and incubated overnight at 37°C and 5% CO₂ to allow the cells to attach and grow. Cells were then stimulated with a control agonist using the assay conditions described below. Following stimulation, signal from Arrestin recruitment was detected using the PathHunter Detection Kit according to the recommended protocol. Calcium mobilization was detected using the Calcium No Wash^{PLUS} detection kit. Please refer to page 2 for recommended assay reagents, detection reagents, and control compounds.

PathHunter Arrestin Assay

Cell Number/Well: 5000

Agonist Incubation Time (minutes): 90

Agonist Incubation Temp. (°C): 37



EC₅₀ for Arrestin Recruitment (nM): 2.26

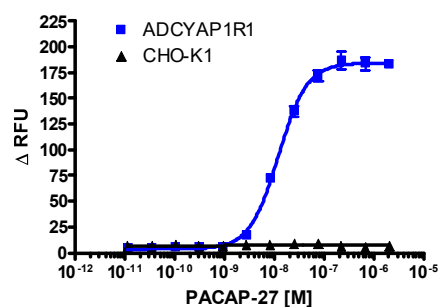
Signal:Background at agonist E_{max}: 13.2

Ca²⁺ Mobilization Assay

Cell Number/Well: 10000

Signal Read Time (@ 2 sec intervals): 2 minutes

Signal Read Temperature (°C): RT



EC₅₀ for Calcium Mobilization (nM): 11.9

Note: This cell line was developed and quality control tested via the PathHunter Arrestin Assay only. Calcium mobilization assay was run independently from the PathHunter Arrestin Assay. Calcium data is background subtracted and represented as Δ RFU (Relative Fluorescence Units).

Passage Stability

This cell line has been confirmed to be stable through a minimum of 10 passages with no significant drop in assay window or change in EC₅₀. Passage stability testing was conducted using the PathHunter Arrestin Assay only.

Mycoplasma Testing

This lot was tested and found to be free of mycoplasma contamination. Data available upon request.

Required Materials

The following additional materials are required but not provided:

Product Use*	Product Description	Catalog Number
Detection	PathHunter® Detection Kit	93-0001
Ca ²⁺ Detection	Calcium No Wash ^{PLUS}	90-0091
Cell Culture	AssayComplete™ Cell Culture Kit-107	92-3107G
Cell Plating	AssayComplete™ Cell Plating 2 Reagent	93-0563R2A
Cell Detachment	AssayComplete™ Cell Detachment Reagent	92-0009
Cell Thawing	AssayComplete™ Thawing Reagent T2	92-4102TR
Cell Freezing	AssayComplete™ Freezing Reagent F2	92-5102FR

*Please inquire about our cell line-specific AssayComplete Starter Packs to get you started with your cell culture needs.

Required Antibiotics

Antibiotic Name	Concentration (µg/mL)	Catalog Number
AssayComplete™ Puromycin	Not Applicable	Not Applicable
AssayComplete™ Hygromycin B	300	92-0029
AssayComplete™ G418	800	92-0030

Additional Ligand Information

Control Compound: PACAP (1-27)

Vendor: Eurofins DiscoverX® (Catalog No. 92-1061)

Limited Use License Agreement

These products may be covered by issued US and/or foreign patents, patent application and subject to Limited Use Label License.

Please visit <https://www.discoverx.com/legal-policies/> for limited-use label license agreement and trademark information for this product.